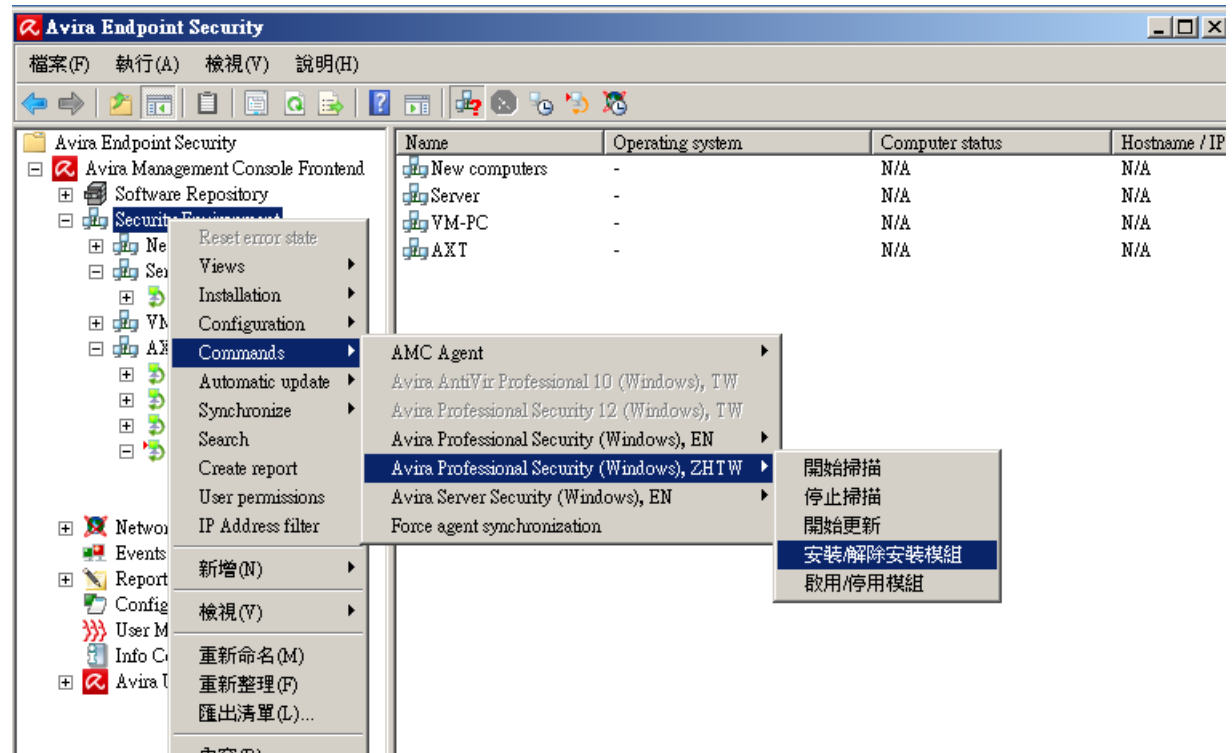


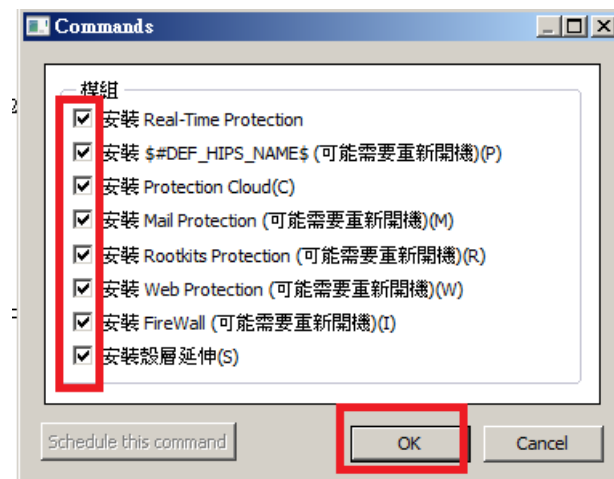
啟用小紅傘最佳防護-AMC 中控端設定

右鍵 Security Environment → Commands → 防毒軟體 → 安裝/解除安裝模組

本範例是以 Client 中文版為例,單位若有其他版本需逐一設定 EX.2012 or 2010 小紅傘單機



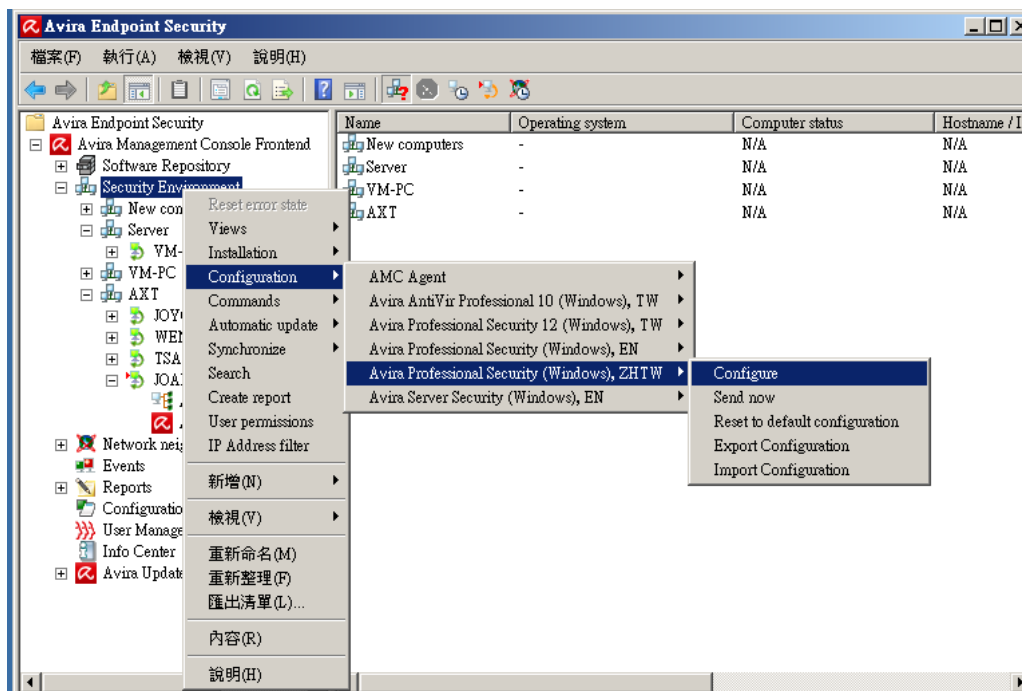
請將所有項目打勾 → OK



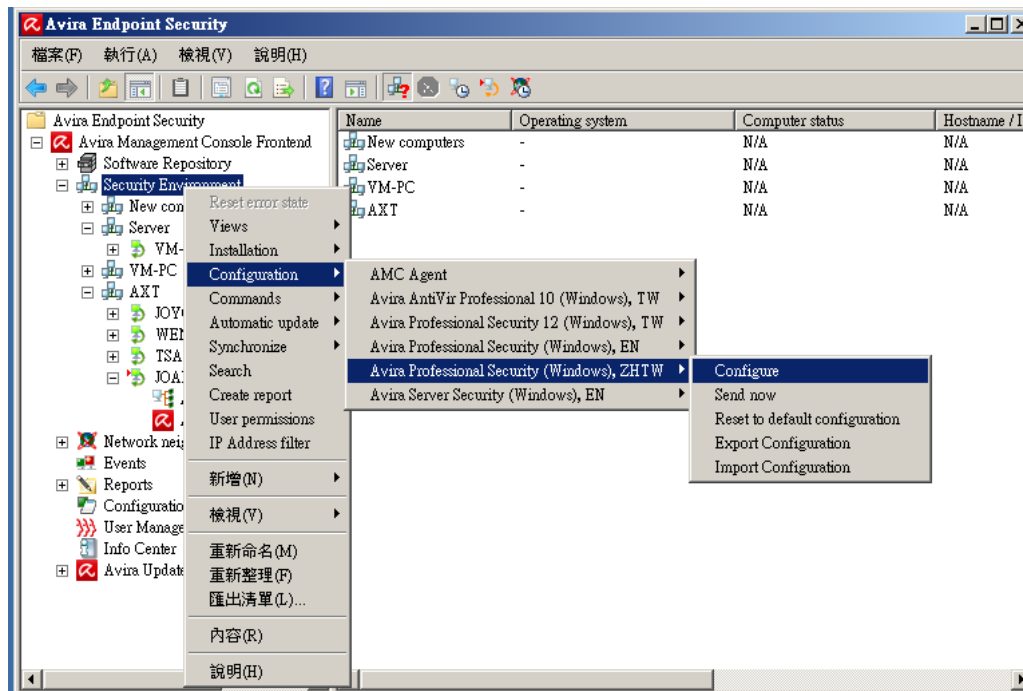
啟用 Protection Cloud

右鍵 Security Environment -> Configuration -> 防毒軟體版本-> Configure ->

一般 -> 進階防護 將 Protection Cloud 打勾



右鍵 Security Environment -> Configuration -> 防毒軟體版本-> Configure



標準組態→威脅類別→將 全部選取 打勾→確定



The screenshot shows the Avira Endpoint Security console interface. On the left is a tree view of the console components. The main area displays a table of installed agents. A context menu is open over the 'Avira Professional Security (Windows, ZHTW)' agent, showing various configuration options.

Avira Endpoint Security Console Components:

- Avira Management Console Frontend
 - Software Repository
 - Security Environment
 - New computers
 - Server
 - VM-PC
 - AXT
 - JOY...
 - WEL...
 - TSA...
 - JOA...
- Network net...
- Events
- Reports
- Configuration
- User Manage...
- Info Center
- Avira Update

Installed Agents Table:

Name	Operating system	Computer status	Hostname / I...
New computers	-	N/A	N/A
Server	-	N/A	N/A
VM-PC	-	N/A	N/A
AXT	-	N/A	N/A

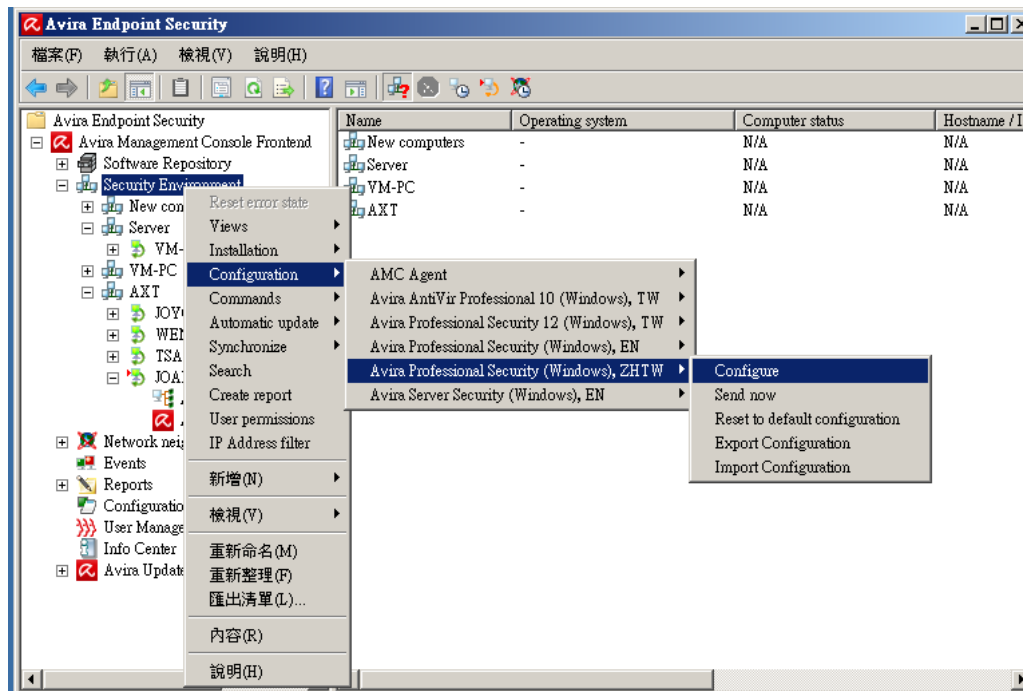
Configuration Menu Options:

- Reset error state
- Views
- Installation
- Configuration**
 - AMC Agent
 - Avira AntiVir Professional 10 (Windows), TW
 - Avira Professional Security 12 (Windows), TW
 - Avira Professional Security (Windows), EN
 - Avira Professional Security (Windows, ZHTW)**
 - Configure**
 - Send now
 - Reset to default configuration
 - Export Configuration
 - Import Configuration
 - Avira Server Security (Windows), EN
- Commands
- Automatic update
- Synchronize
- Search
- Create report
- User permissions
- IP Address filter
- 新增(M)
- 檢視(V)
- 重新命名(M)
- 重新整理(F)
- 匯出清單(L)...
- 內容(R)
- 說明(H)

請依下列圖示修改再點擊 **Send now**

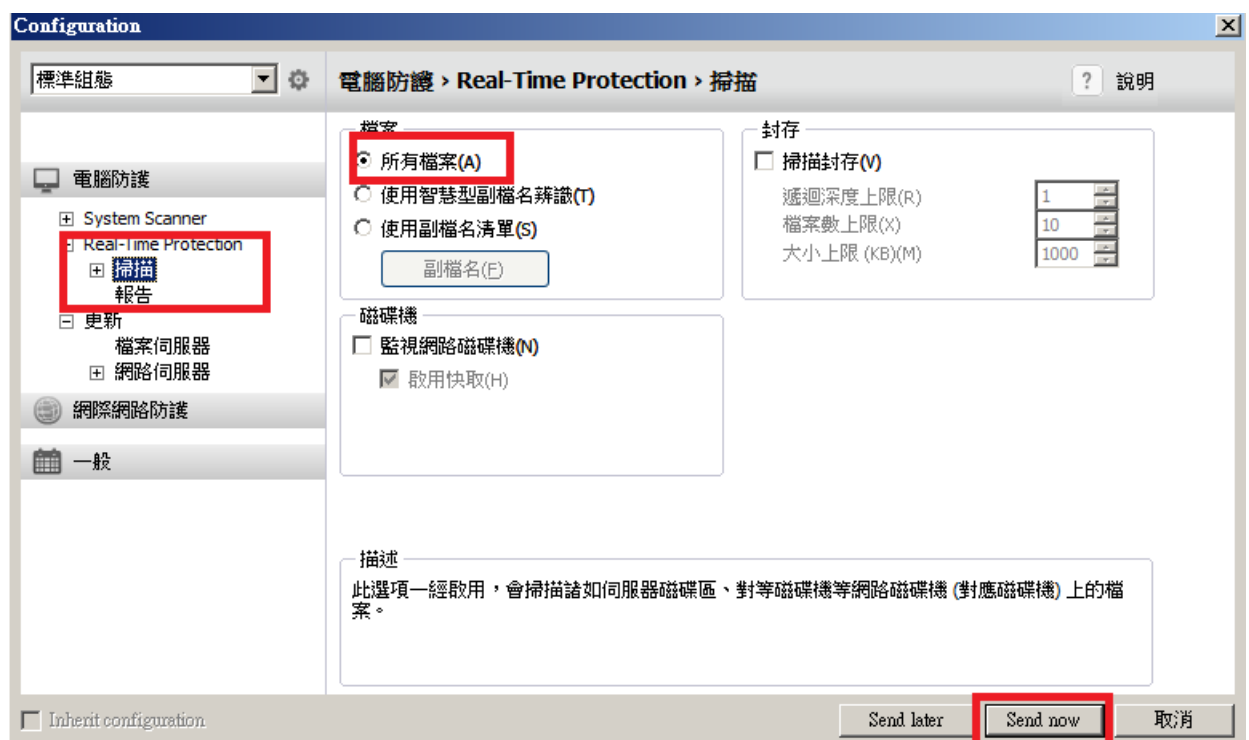


右鍵 Security Environment -> Configuration -> 防毒軟體版本-> Configure



標準組態➡電腦防護➡Real-Time Protection➡掃描

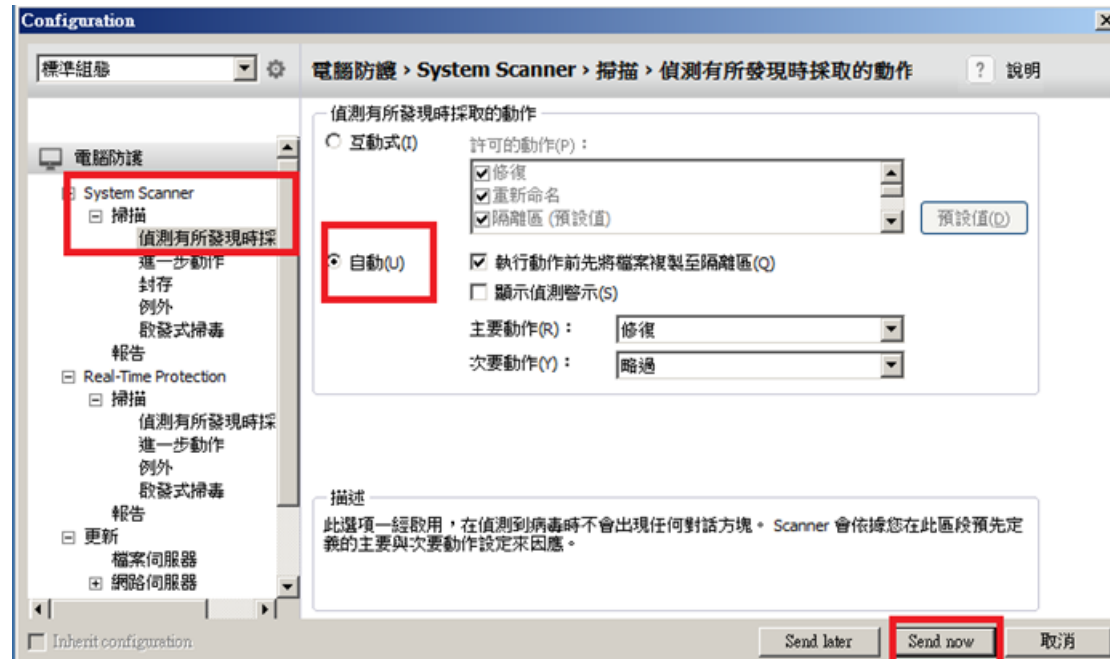
並依下圖所示修改再點擊 Send now



設定發現病毒 強制移入隔離區

右鍵 Security Environment -> Configuration -> 防毒軟體版本-> Configure

標準組態→電腦防護→System Scanner→掃描→偵測有所發現時採取的動作
請修改成自動，將自動存到隔離區，如此有利病毒採樣或誤判還原



標準組態→電腦防護→Real-Time Protection→掃描→
偵測有所發現時採取的動作→自動

